

L6E



- L6E load cells are available in the capacities 50kg~300kg.
- Aluminum construction with parallel beam.
- Silicon adhesive sealed, surface anodized and anti-corrosion.
- Integral structure and easy installation.
- Suitable for pricing scales, platform scales and other electronic weighing devices.

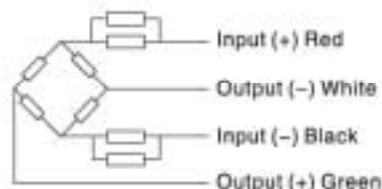
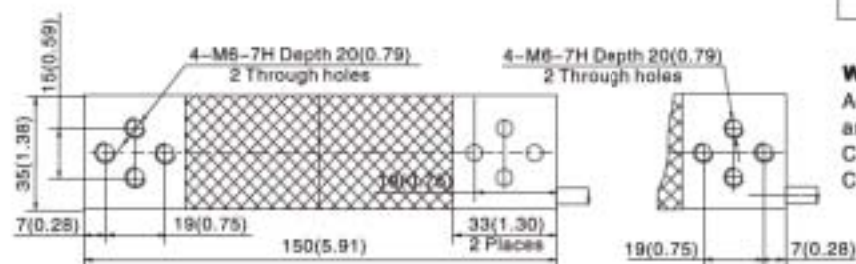
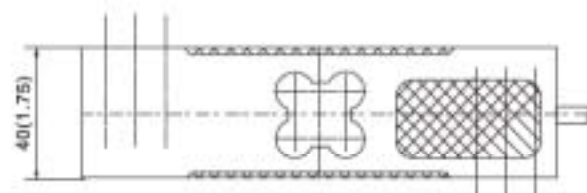
Features

- Capacity: 50kg~300kg
- High accuracy
- Max. platform size: 400×400mm
- OIML Certificates No:R60/2000-CN-00.04 Revision 1
- PTB Approval No.D09-03.21 Revision 1



Specifications		50/60/80/100/150/200/300		
Capacity	kg	C3D	C3	C3G
Accuracy				
Approvals			OIML R60 C3	
Maximum number of verification intervals	n_{max}	2500	3000	4000
Minimum load cell verification interval	V_{min}	$E_{max}/5000$	$E_{max}/7000$	$E_{max}/11000$
Combined error	(%FS)	$\leq \pm 0.030$	$\leq \pm 0.020$	$\leq \pm 0.015$
Creep	(%FS/30min)	$\leq \pm 0.020$	$\leq \pm 0.0167$	$\leq \pm 0.0125$
Temperature effect on sensitivity	(%FS/10°C)	$\leq \pm 0.021$	$\leq \pm 0.0175$	$\leq \pm 0.0131$
Temperature effect on zero	(%FS/10°C)	$\leq \pm 0.028$	$\leq \pm 0.020$	$\leq \pm 0.0127$
Output sensitivity	(mV/V)		2.0 ± 0.2	
Input resistance	(Ω)		406 ± 6	
Output resistance	(Ω)		350 ± 3	
Insulation resistance	(M Ω)		$> 5000(50VDC)$	
Zero balance	(%FS)		2	
Temperature, compensated	(°C)		-10 ~ +40	
Temperature, operating	(°C)		-35 ~ +70	
Excitation, recommended	(V)		5 ~ 12(DC)	
Excitation, max	(V)		18(DC)	
Safe overload	(%FS)		150	
Ultimate overload	(%FS)		300	
Corner correction		0.02%load value/100mm		

Outline Dimension mm/(inch)



Wiring:

Adopt a shielded, 4 conductor cable, and cable jacket is PVC.
Cable length: 2 ± 0.1 m
Cable diameter: 5.3 ± 0.2 mm